

2012 HANKOOK TIRE

Truck & Bus Tyre Catalogue



2012 HANKOOK TIRE

Truck & Bus Tyre Catalogue

Contents

<i>Hankook Tyre Segmentation</i>	04
<i>Load Index & Speed Symbol</i>	06
<i>Truck Tyre Markings</i>	08
<i>Kontrol Technology</i>	10
<i>e-Cube</i>	11
<i>Truck & Bus Radial Tyres</i>	12
<i>TBR Tyre Range</i>	56

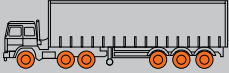
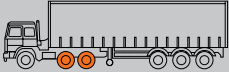
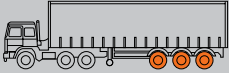
* The data of this booklet can be changed
by manufacturer without prior notice.



AL10

POSITION	CIRCUMSTANCE		SEQUENCE NO		
POSITION	Long Haul	Medium Haul	Urban	Mixed Service, Off Road	Mud & Snow
A All position	AL	AH	AU	AM	AW
D Drive	DL	DH	DU	DM	DW
T Trailer	TL	TH			

L	Long Haul	Long Distance for Highway, Comfortable Road Condition, Maximum Mileage	SEVERITY - +
H	Medium Haul	Medium Distance for Local Road Condition, Optimal Long Tread Life	
U	Urban	City Bus, Urban Traffic	
M	Mixed Service, Off Road	On & Off, Construction	
W	Mud & Snow	Snow	

POSITION	
All position	
Drive	
Trailer	

Size Markings

Markings	295/80R 22.5 152/147L
295	Tyre section width (mm)
80	Aspect ratio((Section height / Section width)x100)
R	Radial structure
22.5	Rim diameter(inch)
152	Max. load index when mounting single wheels (3,550kg)
147	Max. load index when mounting dual wheels (3,075kg)
L	Tyre Max. driving speed symbol (120km/h)

Speed Symbols [km/h & mph]

Symbol	G	J	K	L	M
km/h	90	100	110	120	130
mph	56	62	68	75	81

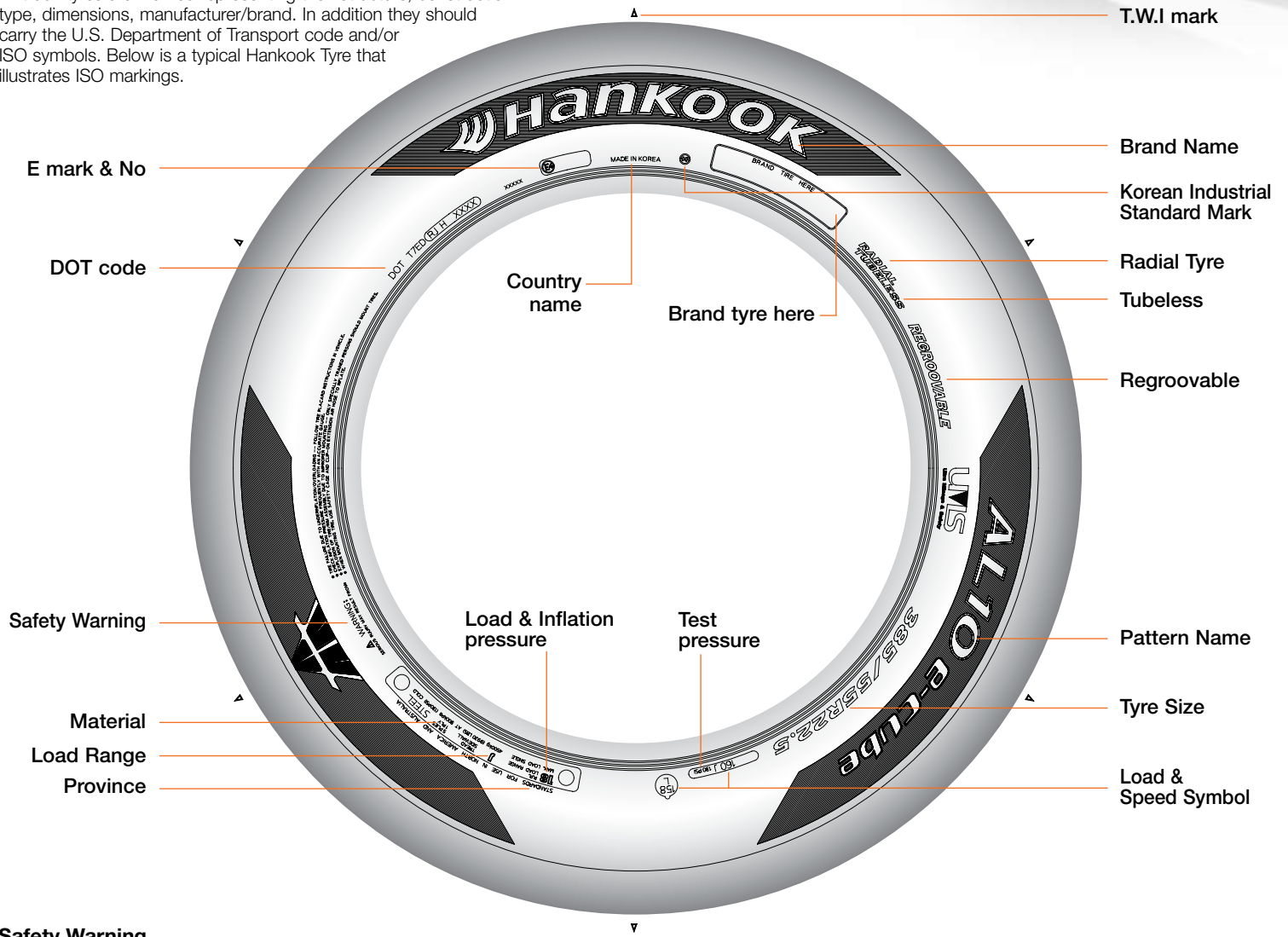
Conversion of Load Index (LI) Into Load Capacities per Tyre [kg and lbs]

LI	kg	(lbs)	LI	kg	(lbs)
110	1060	(2335)	141	2575	(5675)
111	1090	(2405)	142	2650	(5840)
112	1120	(2470)	143	2725	(6010)
113	1150	(2535)	144	2800	(6175)
114	1180	(2600)	145	2900	(6395)
115	1215	(2680)	146	3000	(6615)
116	1250	(2755)	147	3075	(6780)
117	1285	(2835)	148	3150	(6945)
118	1320	(2910)	149	3250	(7165)
119	1360	(3000)	150	3350	(7385)
120	1400	(3085)	151	3450	(7605)
121	1450	(3195)	152	3550	(7825)
122	1500	(3305)	153	3650	(8045)
123	1550	(3415)	154	3750	(8265)
124	1600	(3525)	155	3875	(8545)
125	1650	(3640)	156	4000	(8820)
126	1700	(3750)	157	4125	(9095)
127	1750	(3860)	158	4250	(9370)
128	1800	(3970)	159	4375	(9645)
129	1850	(4080)	160	4500	(9920)
130	1900	(4190)	161	4625	(10195)
131	1950	(4300)	162	4750	(10470)
132	2000	(4410)	163	4875	(10745)
133	2060	(4540)	164	5000	(11025)
134	2120	(4675)	165	5150	(11355)
135	2180	(4805)	166	5300	(11685)
136	2240	(4940)	167	5450	(12015)
137	2300	(5070)	168	5600	(12345)
138	2360	(5205)	169	5800	(12785)
139	2430	(5355)	170	6000	(13230)
140	2500	(5510)			

Truck Tyre Markings

Tyre size Markings

All truck tyres are marked representing their structure, construction type, dimensions, manufacturer/brand. In addition they should carry the U.S. Department of Transport code and/or ISO symbols. Below is a typical Hankook Tyre that illustrates ISO markings.



Safety Warning

Serious Injury may result from :
Tyre failure due to under inflation or overloading - Follow the tyre placard instructions on the vehicle and check inflation pressures frequently.

Only specially trained persons should mount tyres. Follow all safety procedures and inflate using a safety cage and a remote clip-on extension hose.

Kontrol

TECHNOLOGY



Performance



Safety



Comfort



Environment

As Hankook Tyre's own technology philosophy and principle, Kontrol Technology is applied from the research to the development and production stages.

"K" in Kontrol stands for Kinetic or movement. It represents Hankook Tyre's technology philosophy, i.e., the tyre movement can perfectly control the interaction between the driver and the vehicle, between the vehicle and the road, and between the road and the driver.

In addition, it represents the technology principles of controlling performance so that the basis for major quality valuation such as ride, handling, power, stability, and environment could be applied optimally for the customer's benefit.

$$* e\text{-Cube}(e^3) = \text{Energy} \times \text{Economy} \times \text{Environment}$$



Energy

The Improved fuel efficiency in an energy

Economy

The highest economic efficiency, through lower fuel consumption and high mileage

Environment

Reduced harmful emissions through improved fuel efficiency

Long Haul Product (e-Cube Series)



AL10 e-cube



DL10 e-cube



TL10 e-cube

TRUCK & BUS RADIAL TYRE

No matter how far you drive,
Hankook Tyre has the
solution.

HANKOOK Guide for Truck & Bus Radial Tyres

This chart will help you choose the most appropriate tyre for your driving conditions and the region.

If you have any questions, please contact your nearest Hankook representative.

EU : Europe

Driving conditions / Axle	Front	Drive	Trailer
Long-Distance Transport (above 500km)	AL10/AL02 AL15	DL02 DL10	TL10
National & Regional Transport (below 500km)	AH11 AH22+	DH03 DH05	TH10 TH22
Mixed Service (Below 10% Off Road)	AM06	DM03	AM02 AM15
Off Road		DM04	
Urban, Multistop, Transport (in the city)	AU03	AU03	
Snow & Ice Road	AW01	DW02 DW06	

Note : The tyres for front axle can be used for all position. However, if you want to use them on a drive or trailer axle, please contact your nearest Hankook representative.

NOTES

T/T : Tube type

T/L : Tubeless type

M+S : Mud & Snow

Data can be changed by manufacturer without prior notice





e³ (e-cube) = energy x economy x environment

Dimension Data

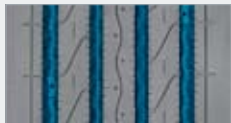
SRS	Size		PR	Type		Tread Depth m/m	Regrooving Depth	Regrooving Width
				T/T	T/L			
TUBELESS								
80	295/80R22.5	152/148M	16	*		13.5	3.0	8.0
	315/80R22.5	156/150L(154/150M)	18	*		14.0	3.0	9.0
70	315/70R22.5	154/150L(152/148M)	18	*		13.5	3.0	8.0
60	295/60R22.5	150/147K(149/146L)	16	*		13.0	3.0	9.0
	315/60R22.5	152/148L	16	*		13.5	3.0	8.0
55	385/55R22.5	158L(160J)	18	*		14.5	3.0	9.0

Technical data subject to change without prior notice

Design Features



Unique tread design and compounds provide longer mileage and irregular wear resistance.

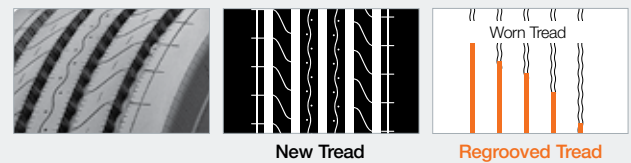


Adoption of optimal linear grooves with wavy wall for maximum straight-line drivability and steering performance with increased water drainage.



Circumferential kerfs provide improved driving safety on cornering.

Regrooving Technical Data



Recommended Vehicle Types & Position





DL10 e-cube

Drive axle radial tyre for long haul

M + S

Dimension Data

SRS	Size		PR	Type		Tread Depth m/m	Regrooving Depth	Regrooving Width
				T/T	T/L			
TUBELESS								
80	295/80R22.5	152/148M	16	*		17.5	3.0	10.0
	315/80R22.5	156/150L(154/150M)	18	*		18.0	3.0	10.0
70	315/70R22.5	154/150L(152/148M)	18	*		17.5	3.0	10.0
60	295/60R22.5	150/147K(149/146L)	16	*		19.0	3.0	10.0
	315/60R22.5	152/148L	16	*		19.5	3.0	10.0

Technical data subject to change without prior notice

e³ (e-cube) = energy x economy x environment

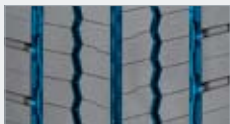
Design Features



Innovative shoulder blocks with optimised tie-bar prevent irregular wear and provide excellent traction performance.

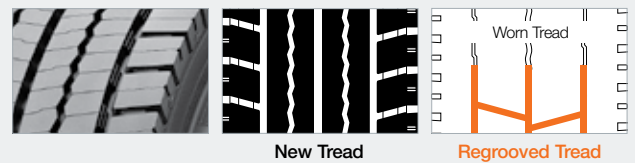


Extra-wide tread blocks and deep grooves ensure ultra high mileage.



Block supporters provide an efficient ejective function for stones with decreased block movement for increased mileage and low rolling resistance.

Regrooving Technical Data



Recommended Vehicle Types & Position





TL10 e-cube

Trailer axle radial tyre for long haul

e³ (e-cube) = energy x economy x environment

Dimension Data

SRS	Size		PR	Type		Tread Depth m/m	Regrooving Depth	Regrooving Width
				T/T	T/L			
TUBELESS								
70	275/70R22.5	152/148J	18	*		12.6	3.0	10.0
65	385/65R22.5	158L(160J)	18	*		15.5	3.0	10.0
45	445/45R19.5	160J	22	*		13.5	3.0	8.0

Technical data subject to change without prior notice

Design Features



Adoption of optimal linear grooves for maximum straight-line drivability and steering performance with increased water drainage.

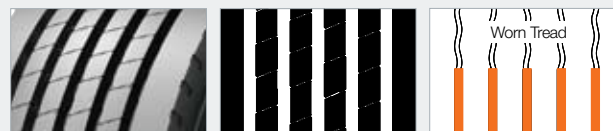


Full-depth kerfs offer exceptional traction throughout the tyres lifespan.



Adoption of wider tread for maximum wear resistance. Wide tread width improved mileage.

Regrooving Technical Data



New Tread

Regrooved Tread

Recommended Vehicle Types & Position





ALO2

All position radial tyre for long haul

Dimension Data

SRS	Size		PR	Type	Tread Depth m/m	Regrooving Depth	Regrooving Width
				T/T			
TUBELESS							
	11R22.5	148/145M	16	*	15.0	3.0	12.0
	12R22.5	152/148M	16	*	15.5	3.0	12.0
80	275/80R22.5	148/145M	16	*	15.5	3.0	12.0
70	255/70R22.5	140/137M	16	*	13.5	3.0	12.0
	275/70R22.5	148/145M	16	*	15.0	3.5	12.0
	305/70R22.5	152/148L(150/148M)	16	*	15.5	3.5	12.0

Technical data subject to change without prior notice

Design Features



5-rib tread design with extensive sipes provides excellent wet traction and lateral stability.

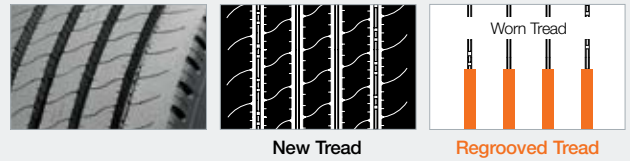


Innovative tread design and compound allow shallower tread depth for irregular wear resistance and higher mileage.



Unique stone rejectors help to eliminate stone retention.

Regrooving Technical Data



Recommended Vehicle Types & Position





Wide-based single tyre for long haul

Dimension Data

SRS	Size		PR	Type		Tread Depth m/m	Regrooving Depth	Regrooving Width
				T/T	T/L			
<i>TUBELESS</i>								
65	385/65R22.5	158L(160J)	18	*		15.5	3.0	12.0

Technical data subject to change without prior notice

Design Features



Secures high mileage as appropriate for long-haul application with tread width.



Maintains high traction / handling performance during tyre use by applying the semi zig-zag groove.



Applied lug to reduce impact on the shoulder and strengthen traction performance.

Regrooving Technical Data



New Tread

Regrooved Tread

Recommended Vehicle Types & Position

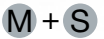




DLO2

Drive axle tyre for long haul

Dimension Data



SRS	Size		PR	Type	Tread Depth m/m	Regrooving Depth	Regrooving Width
				T/T			
	11R22.5	148/145M	16	*	20.5	3.5	8.0
	12R22.5	152/148L	16	*	21.0	3.5	8.0
70	275/70R22.5	148/145M(150/148L)	16	*	18.0	3.5	8.0

TUBELESS

Technical data subject to change without prior notice

Design Features



Innovative shoulder blocks with optimised tie-bar prevent irregular wear and provides excellent traction performance.

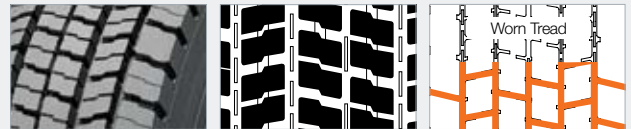


Extra-deep tread and advanced rubber compound provide higher mileage and prevent uneven wear.



Four belt construction and cap/base compound improves durability and retreadability for extra long tyre life.

Regrooving Technical Data



New Tread

Regrooved Tread

Recommended Vehicle Types & Position





Trailer axle Super single tyre for medium haul

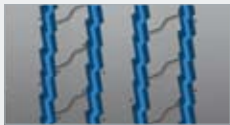
Dimension Data

SRS	Size		PR	Type		Tread Depth m/m	Regrooving Depth	Regrooving Width
				T/T	T/L			
65	385/65R22.5	160J(158L)	18	*		17.0	3.0	12.0
55	385/55R22.5	160J(158L)	18	*		15.0	3.0	12.0

TUBELESS

* This size is currently in development
Technical data subject to change without prior notice

Design Features



Optimised groove angle with semi zig-zag design for stone rejection ability and groove crack prevention.

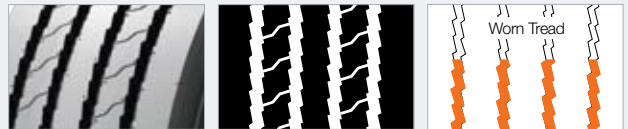


Wide and solid shoulder design for better mileage and belt separation prevention.



Kerfless centre rib enhances free-rolling on axle and driving performance.

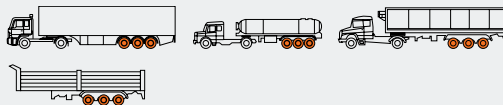
Regrooving Technical Data



New Tread

Regrooved Tread

Recommended Vehicle Types & Position





All position radial tyre for medium haul

Dimension Data

SRS	Size	PR	Type		Tread Depth m/m	Regrooving Depth	Regrooving Width	
			T/T	T/L				
TUBELESS								
75	8R17.5 117/116L	10	*		13.0	3.0	8.0	
	8R19.5 124/122L	12	*		13.0	3.0	8.0	
	8.5R17.5 121/120L	12	*		13.0	3.0	9.0	
	9.5R17.5 129/127L	14	*		14.5	3.0	9.0	
	9.5R17.5 131/129L	16	*		14.5	3.0	9.0	
	10R22.5 141/139L	14	*		13.5	3.5	11.0	
	13R22.5 156/150L	18	*		16.5	3.5	11.0	
	205/75R17.5 124/122M	12	*		13.5	3.0	8.0	
	215/75R17.5 126/124M	12	*		13.0	3.0	8.0	
	225/75R17.5 129/127M	12	*		13.0	3.0	8.0	
70	235/75R17.5 132/130M	14	*		14.0	3.0	8.0	
	245/70R19.5 136/134M	14	*		13.5	3.0	10.0	
	265/70R19.5 140/138M	14	*		13.5	3.0	10.0	
	285/70R19.5 145/143M	16	*		13.5	3.0	11.0	
	305/70R19.5 148/145M	16	*		14.5	3.5	11.0	
	TUBE TYPE							
		900R20 140/137L	14	*		13.5	4.0	8.0
	1000R20 147/143L	16	*		16.0	3.0	8.0	
	1100R20 150/146L	16	*		16.0	4.0	8.0	

Technical data subject to change without prior notice

Design Features



Innovative tread design with stepped ribs and large shoulders promotes excellent lateral stability and precise handling.

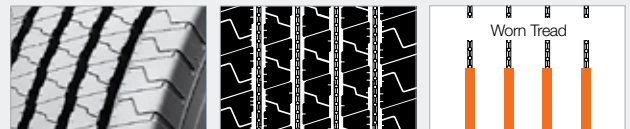


Innovative stone rejectors help deliver additional defence against stone drilling.



Extra deep and wide tread with a unique high scrub compound enhances long and even tread wear.

Regrooving Technical Data



New Tread

Regrooved Tread

Recommended Vehicle Types & Position





New



AH22+

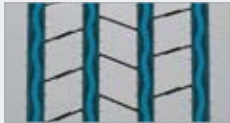
All position radial tyre for regional haul

Dimension Data

SRS	Size		PR	Type		Tread Depth m/m	Regrooving Depth	Regrooving Width
				T/T	T/L			
TUBELESS								
80	295/80R22.5	152/148M	16	*		16.5	3.0	8.0
	315/80R22.5	156/150L(154/150M)	18	*		16.5	3.0	8.0
70	245/70R17.5	136/134M	14	*		13.5	3.0	10.0
	315/70R22.5	154/150L	18	*		14.5	3.0	9.5
AH22 TUBELESS								
	11R22.5	148/145L	16	*		16.0	3.0	8.0
	12R22.5	152/148L	16	*		16.0	3.0	8.0

Technical data subject to change without prior notice

Design Features



Zig-zag grooves help increase traction in new and worn tyre conditions together.

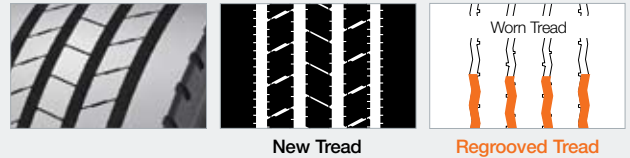


Improved shoulder design to prevent damage from chipping and tearing.



Adoption of deep kerfs to maintain braking performance at the latter phase of wear.

Regrooving Technical Data



Recommended Vehicle Types & Position





DH03

Drive axle radial tyre for medium haul

Dimension Data



SRS	Size		PR	Type	Tread Depth m/m	Regrooving Depth	Regrooving Width
				T/T			
<i>TUBELESS</i>							
	11R22.5	148/145M	16	*	20.0	3.0	11.0
	12R22.5	152/148L	16	*	20.0	3.0	11.0
80	295/80R22.5	152/148M	16	*	21.5	3.0	11.0

Technical data subject to change without prior notice

Design Features



Extra deep and wide tread design provides high removal mileage with excellent retreadability.



Aggressive 3 zig-zag grooves ensure excellent traction in all weather conditions.



Unique stone ejector in each groove protects belts from potential damage.

Regrooving Technical Data

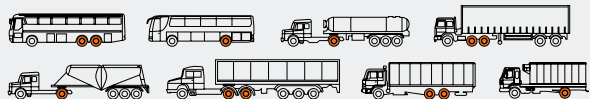


New Tread



Regrooved Tread

Recommended Vehicle Types & Position





DH05

Drive axle radial tyre for medium haul



Dimension Data

SRS	Size	PR	Type		Tread Depth m/m	Regrooving Depth	Regrooving Width
			T/T	T/L			
TUBELESS							
	8R17.5	117/116L	10	*	14.0	3.0	6.0
	8.5R17.5	121/120L	12	*	15.5	3.0	6.0
	9.5R17.5	131/129L	16	*	16.5	3.0	6.0
	11R22.5	148/145L	16	*	21.0	3.0	10.0
	12R22.5	152/148L	16	*	22.5	3.0	10.0
80	295/80R22.5	152/148M	16	*	23.0	3.0	10.0
	315/80R22.5	154/150M(156L)	18	*	23.5	3.0	10.0
75	205/75R17.5	124/122M	12	*	15.5	3.0	8.0
	215/75R17.5	126/124M	12	*	15.0	3.0	8.0
	225/75R17.5	129/127M	12	*	16.0	3.0	8.0
	235/75R17.5	132/130M	14	*	15.5	3.0	8.0
70	245/70R17.5	136/134M	14	*	15.5	3.0	8.0
	245/70R19.5	137/135M	14	*	16.0	3.0	10.0
	265/70R19.5	140/138M	14	*	16.0	3.0	10.0
	285/70R19.5	145/143M	16	*	17.0	3.0	10.0
	305/70R19.5	148/145M	16	*	18.5	3.0	10.0
	315/70R22.5	154/150L	18	*	19.5	3.0	10.0
TUBE TYPE							
	1000R20	147/143L	16	*	21.0	3.0	8.0
	1100R20	150/146L	16	*	22.5	3.0	10.0

Technical data subject to change without prior notice

Design Features



Extra wide tread and deep grooves ensure ultra high mileage.



Optimised block shape provides block rigidity under heavy loads for outstanding traction and tread stability.



High density lateral grooves help provide excellent traction in all weather conditions.

Regrooving Technical Data



New Tread

Regrooved Tread

Recommended Vehicle Types & Position





Trailer axle radial tyre for medium haul

Dimension Data

SRS	Size		PR	Type	Tread Depth m/m	Regrooving Depth	Regrooving Width
				T/T			
<i>TUBELESS</i>							
75	9.5R17.5	143/141J	18	*	13.5	3.0	13.0
	215/75R17.5	135/133J	16	*	13.0	3.0	13.0
	235/75R17.5	143/141J	16	*	12.5	3.0	13.0
70	245/70R17.5	143/141J	16	*	12.5	3.0	13.0
	245/70T19.5	141/140J	16	*	12.5	3.0	13.0
	265/70R19.5	143/141J	18	*	13.5	3.0	13.0
	285/70R19.5	150/148J	18	*	14.5	3.0	13.0
65	425/65R22.5	165K	18	*	16.5	3.0	15.0
55	385/55R22.5	160J(158L)	18	*	15.5	3.0	15.0

Technical data subject to change without prior notice

Design Features



Extra deep and wide tread provides long original life.

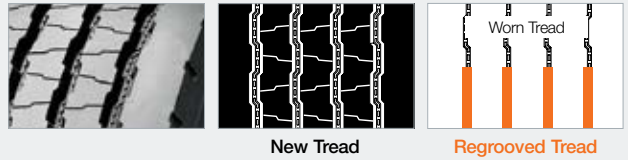


Outstanding water drainage throughout the life of the tyre and improved traction control.

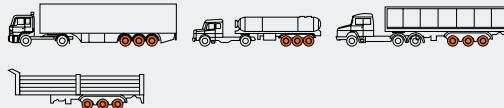


Stone ejectors in all 4 grooves fight stone retention and drilling for extra long life of the tyre.

Regrooving Technical Data



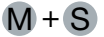
Recommended Vehicle Types & Position





All position radial tyre for on & off conditions

Dimension Data



SRS	Size		PR	Type		Tread Depth m/m	Regrooving Depth	Regrooving Width
				T/T	T/L			
TUBELESS								
70	265/70R19.5	143/141J	18	*		16.5	4.0	10.0
	275/70R22.5	148/145K	16	*		17.5	4.0	10.0
65	425/65R22.5	165K	18	*		16.5	4.0	10.0
	445/65R22.5	169K	20	*		18.5	4.0	10.0

Technical data subject to change without prior notice

Design Features



Innovative tread design with secondary sipes provides outstanding traction in all weather conditions.



Tie-bar between blocks increases block rigidity for added traction and enhanced resistance against uneven wear.

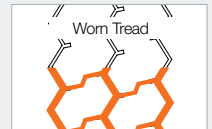


Robust 4-belt construction with specific protection layer delivers extra-long casing life.

Regrooving Technical Data



New Tread



Regrooved Tread

Recommended Vehicle Types & Position





All position radial tyre for on & off conditions

Dimension Data

SRS	Size	PR	Type		Tread Depth m/m	Regrooving Depth	Regrooving Width
			T/T	T/L			
TUBELESS							
80	10R22.5 144/142K	16	*		14.5	3.0	10.0
	11R22.5 148/145K	16	*		18.5	4.0	12.0
	12R22.5 152/148K	16	*		18.5	4.0	12.0
	13R22.5 154/150K(156/150G)	18	*		18.5	4.0	12.0
	295/80R22.5 152/148K	16	*		18.0	4.0	12.0
	315/80R22.5 156/150K	18	*		18.5	4.0	12.0
TUBE TYPE							
80	900R20 141/139K	14	*		14.5	3.0	10.0
	1200R20 154/150K(156/150G)	18	*		18.5	4.0	12.0

Technical data subject to change without prior notice

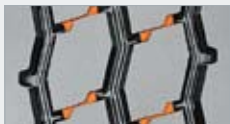
Design Features



Solid shoulder with innovative 2-step lug shape promotes excellent grip performance and traction.

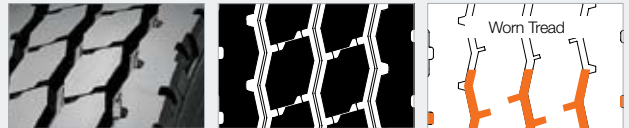


Extra deep tread with exclusive compound featuring maximised resistance against cutting and chipping enhances extra-long tread life.



Lateral surface grooves between blocks provides good water drainage.

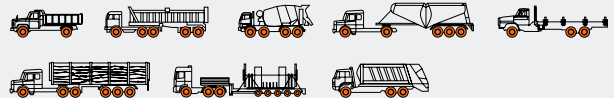
Regrooving Technical Data



New Tread

Regrooved Tread

Recommended Vehicle Types & Position





AM15
All position radial tyre for on & off conditions

Dimension Data

M + S

SRS	Size		PR	Type		Tread Depth m/m	Regrooving Depth	Regrooving Width
				T/T	T/L			
65	385/65R22.5	158L(160J)	18	*		18	3.0	12.0

TUBELESS

Technical data subject to change without prior notice

Design Features



Extra-wide tread blocks and deep grooves ensure ultra high mileage.

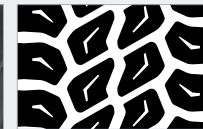


Open shoulder blocks with optimised tie-bar prevents irregular wear and provides excellent traction performance for off-road conditions.



Extra-wide grooves are designed for excellent stone rejection and improved traction.

Regrooving Technical Data



New Tread

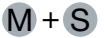
Regrooved Tread

Recommended Vehicle Types & Position





Dimension Data



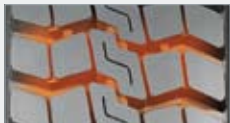
SRS	Size	PR	Type		Tread Depth m/m	Regrooving Depth	Regrooving Width
			T/T	T/L			
TUBELESS							
80	11R22.5 148/145K	16	*		20.0	3.0	10.0
	12R22.5 152/148K	16	*		20.0	3.0	10.0
	13R22.5 154/150K	18	*		20.0	3.0	10.0
	315/80R22.5 154/150M(156L)	18	*		21.0	3.0	10.0
	295/80R22.5 152/148K	16	*		20.5	3.0	10.0
TUBE TYPE							
80	1100R20 150/146K	16	*		20.0	3.0	10.0
	1200R20 154/150K	18	*		20.0	3.0	10.0

Technical data subject to change without prior notice

Design Features



Specific tread compound provides excellent chip and cut resistance.



Innovative lugged directional design ensures outstanding self-cleaning capability.



Robust 4-belt construction with specific protection layer helps deliver exceptional casing life.

Regrooving Technical Data

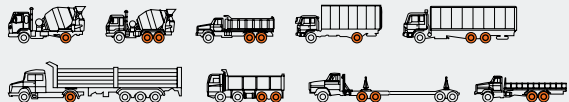


New Tread



Regrooved Tread

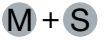
Recommended Vehicle Types & Position





Drive axle radial tyre for off road conditions

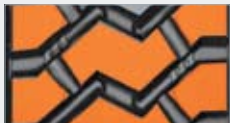
Dimension Data



SRS	Size		PR	Type		Tread Depth m/m	Regrooving Depth	Regrooving Width
				T/T	T/L			
TUBELESS								
	11R22.5	148/145G	16	*		25.0	4.0	14.0
	12R22.5	152/148G	16	*		25.0	4.0	14.0
	13R22.5	154/150G	18	*		24.0	4.0	14.0
TUBE TYPE								
	1200R20	154/150G	18	*		24.0	4.0	14.0

Technical data subject to change without prior notice

Design Features



Aggressive lug tread pattern with open shoulder enhances powerful grip and improves self-cleaning capability.



Massive tread blocks and specific tread compound offer superb resistance against cuts and penetrations.



Robust four-belt construction with a specific protection layer delivers extra-long casing life.

Regrooving Technical Data

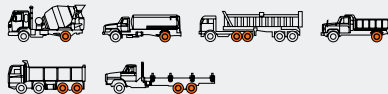


New Tread



Regrooved Tread

Recommended Vehicle Types & Position





Winter



Studless type all position winter tyre

Dimension Data

M + S

SRS	Size		PR	Type	Tread Depth m/m	Regrooving Depth	Regrooving Width
				T/T			
TUBELESS							
80	295/80R22.5	152/148K	16	*	16.5	4.0	12.0
	315/80R22.5	156/150K	18	*	17.0	4.0	12.0
70	315/70R22.5	154/150L	18	*	16.0	3.0	7.0
65	385/65R22.5	158L(160J)	18	*	16.0	3.0	7.0

Technical data subject to change without prior notice

Design Features



Innovative lateral wavy sipes provide outstanding grip performance throughout the life of the tyre under snowy and icy road conditions.



New specific tread compound ensures stronger grip performance on road surface.

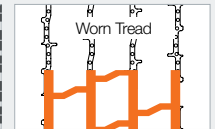
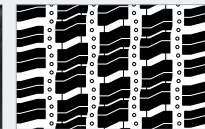


Extra wide and deep tread with stepped shoulder ribs help deliver exceptional steering performance on snowy conditions.

Regrooving Technical Data

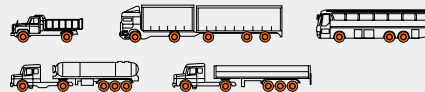


New Tread



Regrooved Tread

Recommended Vehicle Types & Position





Winter



Studless type drive axle winter tyre

Dimension Data

M + S

SRS	Size		PR	Type		Tread Depth m/m	Regrooving Depth	Regrooving Width
				T/T	T/L			
<i>TUBELESS</i>								
80	12R22.5	152/148L	16	*		20.5	4.0	12.0
	225/80R17.5		14	*		16.0	3.0	12.0
	295/80R22.5	152/148L	16	*		20.5	4.0	12.0
	315/80R22.5	154/150L	18	*		21.5	4.0	12.0

Technical data subject to change without prior notice

Design Features



Innovative tread design with full depth lateral sipes ensures excellent grip on snowy and icy roads throughout the life of the tread.

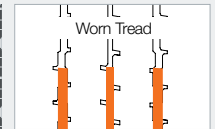
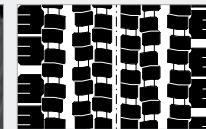


Wide open shoulder grooves help deliver exceptional traction performance in wet and snowy conditions without reducing tread life.



Specific tread compound provides long tread life.

Regrooving Technical Data



New Tread

Regrooved Tread

Recommended Vehicle Types & Position





Dimension Data

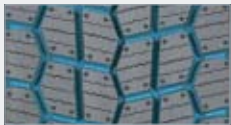
M + S

SRS	Size		PR	Type	Tread Depth m/m	Regrooving Depth	Regrooving Width
				T/T			
80	295/80R22.5	152/148M	16	*	21.3	3.0	10.0
	315/80R22.5	156/150L	18	*	21.3	3.0	10.0
70	315/70R22.5	154/150L	18	*	21.3	3.0	10.0

TUBELESS

Technical data subject to change without prior notice

Design Features



Zig-zag type and 5-grooves provide better traction for snow and ice conditions.



Multi kerf and dimple pattern improve traction on snow and ice conditions.

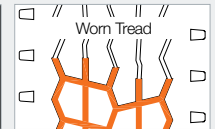
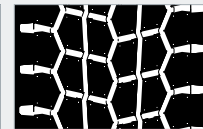


3 dimensional kerfs provide better traction and even wear.

Regrooving Technical Data



New Tread



Worn Tread
Regrooved Tread

Recommended Vehicle Types & Position





AU03

Multi purpose all position tyre for city traffic

Dimension Data



SRS	Size		PR	Type	Tread Depth m/m	Regrooving Depth	Regrooving Width
				T/T			
<i>TUBELESS</i>							
80	11R22.5	148/145J	16	*	19.0	3.0	9.0
	275/80R22.5	149/146J	16	*	19.0	3.0	9.0
70	295/80R22.5	152/148J	16	*	19.0	3.0	9.0
	275/70R22.5	148/145J	16	*	19.0	3.0	9.0

Technical data subject to change without prior notice

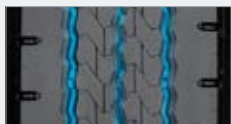
Design Features



Expanded shoulder width and adoption of pitch allocation for increased stiffness on the shoulder area.

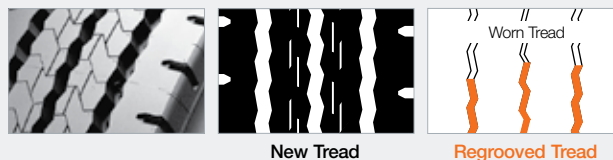


Horizontal kerfs inserted at the tread rib and full depth sipe for improved traction performance.



Decrease in zig-zag groove angle (more linear groove) improved fuel efficiency and increased resistance to hydroplaning.

Regrooving Technical Data



Recommended Vehicle Types & Position



TBR Tyre Range

PATTERN	SIZE / PR	PATTERN										PATTERN												
		AL02	AL10	AL15	DL02	DL10	TH22	TL10	AH11	AH22+	AH22		DH03	DH05	TH10	AM02	AM06	AM15	DM03	DM04	AW01	DW02	DW06	AU03
8R17.5	10								•					•										
8R19.5	12								•															
8.5R17.5	12								•					•										
9.5R17.5	14								•															
9.5R17.5	16								•					•										
9.5R17.5	18														•									
10R22.5	14																							
10R22.5	16								•							•								
11R22.5	16	•			•						•				•	•		•	•					•
12R22.5	16	•			•						•			•	•			•	•			•		
13R22.5	18								•							•		•	•					
225/80R17.5	14																					•		
275/80R22.5	16	•																						•
295/80R22.5	16		•			•				•					•			•			•	•	•	•
315/80R22.5	18		•			•				•					•			•			•	•	•	•
205/75R17.5	12								•					•										
215/75R17.5	12								•					•										
215/75R17.5	16														•									
225/75R17.5	12								•					•										
235/75R17.5	14								•					•										
235/75R17.5	16														•									
245/70R17.5	14									•				•										
245/70R17.5	16								•					•										
245/70R19.5	14								•					•										
245/70R19.5	18													•										
255/70R22.5	16	•																						
265/70R19.5	14								•					•										
265/70R19.5	18														•									
275/70R22.5	16	•			•										•									•
275/70R22.5	18							•																
285/70R19.5	16								•					•										
285/70R19.5	18													•										
305/70R19.5	16								•					•										
305/70R22.5	16	•																						
315/70R22.5	16																							
315/70R22.5	18		•			•				•				•							•		•	
385/65R22.5	18			•			•	•									•				•			
425/65R22.5	18													•	•									
445/65R22.5	20														•									
295/60R22.5	16		•			•																		
315/60R22.5	16		•			•																		
385/55R22.5	18		•				•							•										
445/45R19.5	22							•																
900R20	14								•							•								
1000R20	16								•					•										
1100R20	16													•					•					
1200R20	18													•		•		•	•					

Overseas Networks

Regional HQ

HANKOOK TIRE KOREA HEADQUARTERS

647-15 Yeoksam-dong, Gangnam-gu, Seoul, Korea

Tel : +82-2-2222-1000

Fax : +82-2-2222-1100

HANKOOK TIRE EUROPE GMBH

Siemens Strasse 5A, 63263 Neu-Isenburg, Germany

Tel : +49-6102-8149-123

Fax : +49-6102-8149-100

HANKOOK TIRE AMERICA CORP.

1450 Valley Road, Wayne, New Jersey 07470, U.S.A.

Tel : +1-973-633-9000

Fax : +1-973-633-0028

SHANGHAI HANKOOK TIRE SALES CO., LTD.

10f, Guangqi Building, #1001, Qinzhoubei Road, 200233, Shanghai, China

Tel : +86-21-3363-6888

Fax : +86-21-3363-7980-83

Original Equipment Office

HANKOOK TIRE CO., LTD. ORIGINAL EQUIPMENT OFFICE

Muenchner Strasse 40 A1, 30855

Langenhagen, Germany

Tel : +49-511-6460-970

Fax : +49-511-6460-9777

HANKOOK TIRE CO., LTD. ORIGINAL EQUIPMENT OFFICE

38777 West Six Mile Road, Suite #301 Livonia, Michigan 48152, U.S.A.

Tel : +1-734-542-1463

Fax : +1-734-542-1461

Subsidiary

HANKOOK REIFEN DEUTSCHLAND GMBH

Siemens Strasse 5A, 63263 Neu-Isenburg, Germany

Tel : +49-6102-5998-200

Fax : +49-6102-5998-249

HANKOOK TYRE U.K. LTD.

Fawsley Drive, Heartlands Business Park, Daventry, Northamptonshire, NN11 8UG, U.K.

Tel : +44-1327-304-100

Fax : +44-1327-304-110

HANKOOK FRANCE S.A.R.L.

Central Parc II 115 (4 Eme Etage) Boulevard Stalingrad 69100 Villeurbanne, France

Tel : +33-4-7269-7669

Fax : +33-4-7894-1572

HANKOOK TIRE ITALIA S.R.L.

Centro Direzioneale Colleoni, Palazzo

Liocorno 1, Via Paracelso, 2, 20864 Agrate

Brianza (MB), Italy

Tel : +39-039-6846-321

Fax : +39-039-6091-372

HANKOOK ESPANA S.A.

Avda. De La Industrias, No 4 Edificio 3, 2-D Parque, Empresarial Natea, 28108

Alcobendas Madrid, Spain

Tel : +34-902-102-716

Fax : +34-91-662-9802

HANKOOK TIRE NETHERLANDS B.V.

Koerilenstraat 2-6, 3199 LR Maasvlakte Rotterdam, Havennumber 9018, The Netherlands

Tel : +31-181-353010

Fax : +31-181-353358

HANKOOK TIRE BUDAPEST

KERESKEDELMI KFT.

IP West Building, Budafoki ut 91-93

H-1117 Budapest, Hungary

Tel : +36-1-464-3660

Fax : +36-1-464-3669

HANKOOK TIRE EUROPE GMBH

STOCKHOLM OFFICE FILIAL

Kanalvagen 3A, 194 61 Upplands Vasby, Sweden

Tel : +46-8-590-839-10

Fax : +46-8-590-839-12

HANKOOK TIRE EUROPE GMBH

ISTANBUL LIAISON OFFICE

Dereboyu cad. Meydan sk. Beybi Giz Plaza

N:28 K:21 D:80 Maslak, 34398 Istanbul, Turkey

Tel : +90-212-290-3690

Fax : +90-212-290-3691

HANKOOK TIRE RUS LLC

Floor 3, Building 4, 2/4, Luznetskaya Naberejnaya, Moscow, Russia, 119270, Russia

Tel : +7-495-956-2340

Fax : +7-295-956-2343

HANKOOK TIRE WARSZAWA OFFICE

Bokszerska 66 Street, 02-690 Warszawa, Poland

Tel : +48-22-395-5738

Fax : +48-22-395-5749

HANKOOK TIRE CANADA CORP.

30 Resolution Drive, Brampton, ON, L6W 0A3, Canada

Tel : +1-905-463-9802

Fax : +1-905-463-9792

HANKOOK TIRE DE MEXICO S.A. DE C.V.

Paseo De La Reforma #199, Piso 5, Oficina #502 Colonia, Cuauhtemoc (Entre Rio

Marne Y Rio Neva) C.P. 06500, Mexico, D.F

Tel : +52-55-5535-1104

Fax : +52-55-5535-1058

HANKOOK TIRE CO., LTD. AGENCIA EN CHILE

San Pio X 2460, Oficina 1604, Providencia, Santiago, Chile

Tel : +56-2-596-8460

Fax : +56-2-596-8463

HANKOOK TIRE CO., LTD. PANAMA OFFICE

Edificio Proconsa1, 11A/B Calle 50 Manuel Maria Icaza Bella Vista, Panama City / Rep. of Panama

Tel : +507-263-3008, 3027

Fax : +507-263-3006

HANKOOK TIRE DO BRASIL SERVICOS DE INTERMEDIACAO DE NEGOCIOS NO RAMO DE PNEUS LTDA

Brooklin - Sao Paulo/Sp - Cep 04571-000, Brazil

Tel : +55-11-3045-0544

Fax : +55-11-3045-2119

HANKOOK TIRE CO., LTD. BOGOTA OFFICE

Av.19 No.97-05 Of. 701, Bogota, Colombia

Tel : +571-743-4545

HANKOOK TIRE CO., LTD. AKRON

TECHNICAL CENTER

3535 Forest Lake Drive Uniontown, Ohio 44685, U.S.A.

Tel : +1-330-896-5295

Fax : +1-330-896-6579

HANKOOK TIRE JAPAN CORP.

9th Fl, Naniwasuji Honmachi Mid Bldg.

2-3-2 Utsubo-Honmachi, Nishi-Ku, Osaka, Japan

Tel : +81-6-4803-8871

Fax : +81-6-4803-8882

HANKOOK TYRE AUSTRALIA PTY., LTD.

Building A, Level 3, 11 Talavera Road,

Macquarie Park, NSW 2113, Australia

Tel : +61-2-9870-1200

Fax : +61-2-9870-1201

HANKOOK TIRE CO., LTD. DUBAI OFFICE

Al Moosa Tower 2, #1002 P.O.Box 15097

Dubai, U.A.E.

Tel : +971-4-332-1330

Fax : +971-4-332-1314

HANKOOK TIRE CO., LTD. JEDDAH

OFFICE

P.O. Box 5922, Jeddah 21432, Kingdom of Saudi Arabia

Tel : +966-2-680-6160

Fax : +966-2-680-6468

HANKOOK TIRE CO., LTD. BANGKOK

OFFICE

11th Floor, Two Pacific Place Bldg., 142

Sukhumvit Road, Klongtoey, Bangkok

10110, Thailand

Tel : +66-2-653-3790

Fax : +66-2-653-4185

HANKOOK TIRE KUALA LUMPUR OFFICE

22-08, One Mont Kiara, Jalan Kiara, Mont

Kiara, 50480, Kuala Lumpur, Malaysia

HANKOOK TIRE CO., LTD. CAIRO OFFICE

5 Waadi Nile St., El Maadi, Cairo, Egypt

Tel : +20-2-2750-7136

Fax : +20-2-2751-4014

HANKOOK TIRE NEW DELHI LIAISON

OFFICE

Unit No.102, 1st Floor, Bptp Park Centra, Sector 30, NH8, Gurgaon 122001, Haryana, India

Tel : +91-124-4958050

Fax : +91-124-4958060

HANKOOK TIRE CO., LTD. SOUTH AFRICA

6th Floor, Sinosteel Plaza, 159 Rivonia Road,

Morningside Ext., Sandton, 2146,

Johannesburg, South Africa.

Tel : +27-11-784-7714 / 6716

Fax : +27-11- 784-5873

HANKOOK TIRE CO., LTD. JAKARTA OFFICE

25th FL Citibank Tower, Bapindo Plaza

JL.Jend.Sudirman Kav 54-55, 12190

Tel : +62-21-2557-1078-9

Fax : +62-21-2557-1087

HANKOOK TIRE SINGAPORE BRANCH

24 Raffles Place, #25-04B Clifford Centre, Singapore 048621

Tel : +65-6323-7011 / +65-6323-7022

Fax : +65-6323-7077

Technical Center

HANKOOK TIRE CO., LTD. EUROPE

TECHNICAL CENTER

Muenchner Strasse 40 A1, 30855

Langenhagen, Germany

Tel : +49-511-6460-970

Fax : +49-511-6460-9778

JAPAN TECHNICAL OFFICE

9f Naniwasuji Honmachi Mid Bldg. 2-3-2, Utsubo-Honmachi, Nishi-ku, Osaka 550-0004, Japan

Tel : +81-6-4803-8871

Fax : +81-6-4803-8882

CHINA TECHNICAL CENTER

Dong Fang Lu, Jiaxing Edz, Jiaxing City,

Zhejiang Province, China

Tel : +86-573-200-5088

Fax : +86-573-220-5086

Plant

HUNGARY PLANT

H-2459, Racalmas Hankook Ter 1, Hungary

Tel : +36-25-556-087

Fax : +36-25-556-345

JIAXING PLANT

Dong Fang Lu, Jiaxing EDZ., Jiaxing City,

Zhejiang Province, China

Tel : +86-573-220-5088

Fax : +86-573-220-5086

JIANGSU PLANT

No.1 South Hangtai Road, Huaian City,

Jiangsu Province, China

Tel : +86-517-350-5021

Fax : +86-17-350-5100